



be seen
be heard
belong

bemix.org

We are people with and without learning difficulties and/or autism in Kent and Medway, working and learning together.





be seen
be heard
belong

bemix.org

We piloted supported internships in 2016/17

We began working under an ESFA contract in 2017/18



SUPPORTED INTERNSHIP

A study programme for young people aged 16-24 with an Education, Health and Care Plan who want to move into employment.



bemix.org

EDUCATION AND SKILLS FUNDING AGENCY (ESFA)

The government agency education providers hold a contract with, accountable to the Department for Education.



bemix.org

SPECIAL POST-16 INSTITUTION (SPI)

The Children and Families Act 2014 designation for a provider 'specially organised to make special educational provision for students with special educational needs'.

[Part 3, Section 83]



THE ESFA'S DUE DILIGENCE PROCESS

You need to be named by a lead local authority for 10 or more places, but can work across multiple authorities.

Your local authority must verify that you will be named in the EHC Plans of 10 or more high needs students.



THE ESFA'S DUE DILIGENCE PROCESS

Three stages:

Legal status and background

Financial health

Quality of provision



‘SECTION 41 STATUS’

Section 41 of the Children and Families Act 2014

The Secretary of State may approve an institution for the purpose of enabling the institution to be the subject of a request for it to be named in an EHC plan.



DESIGNING AND DEVELOPING A BEST PRACTICE MODEL

Staff team

Integrating work placements with
functional skills

Employer engagement



DESIGNING AND DEVELOPING A BEST PRACTICE MODEL

Before and after the academic year

The possibility of a two year model

Collaborating with other providers



THE ESFA HIGH NEEDS FUNDING SYSTEM

A 'high needs student' is aged 16-25 and requires additional support costing over £6,000 per year. Students aged 19-25 need an EHC Plan.



THE ESFA HIGH NEEDS FUNDING SYSTEM

Element 1 is paid by the ESFA: the core funding per place for any young person in education.

Element 2 is paid by the ESFA: £6,000 per high needs place for additional support. Elements 1 and 2 comprise 'place funding'.

Element 3 is paid by the Local Authority: the 'top-up' funding added to Element 2 to fully fund additional support.



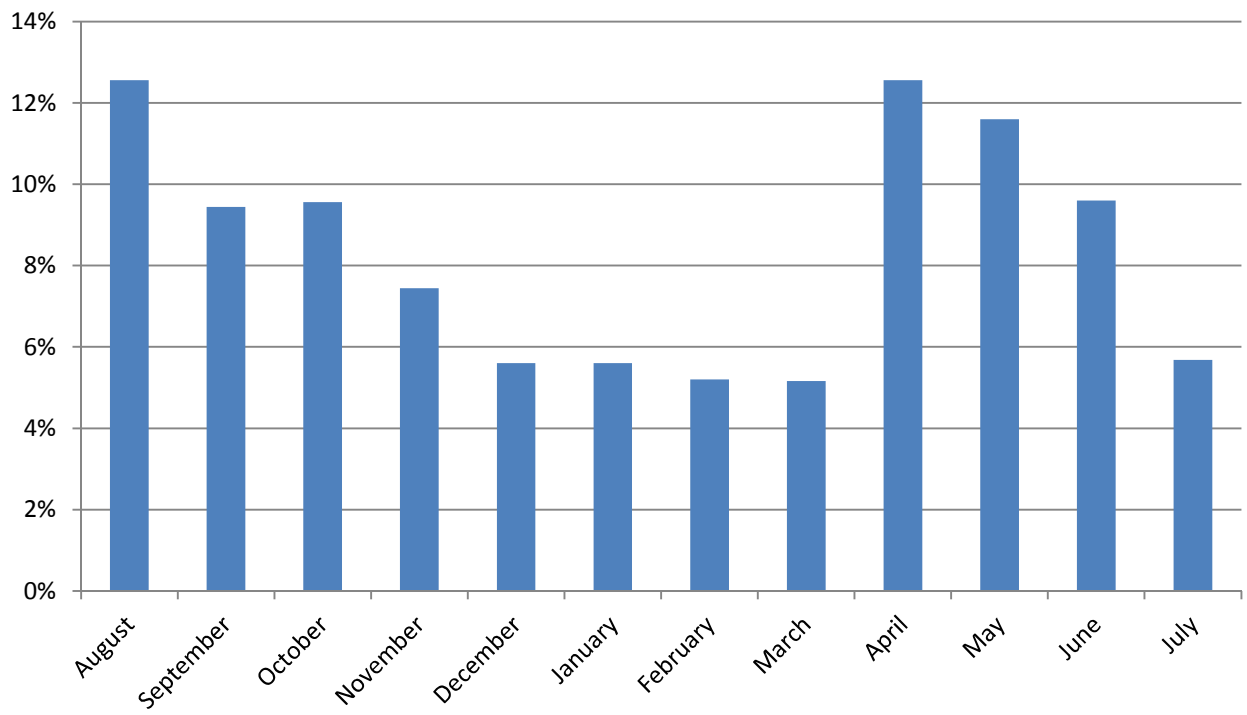
ACCESS TO WORK

How you can fund job coaching and reasonable adjustments in supported internships.



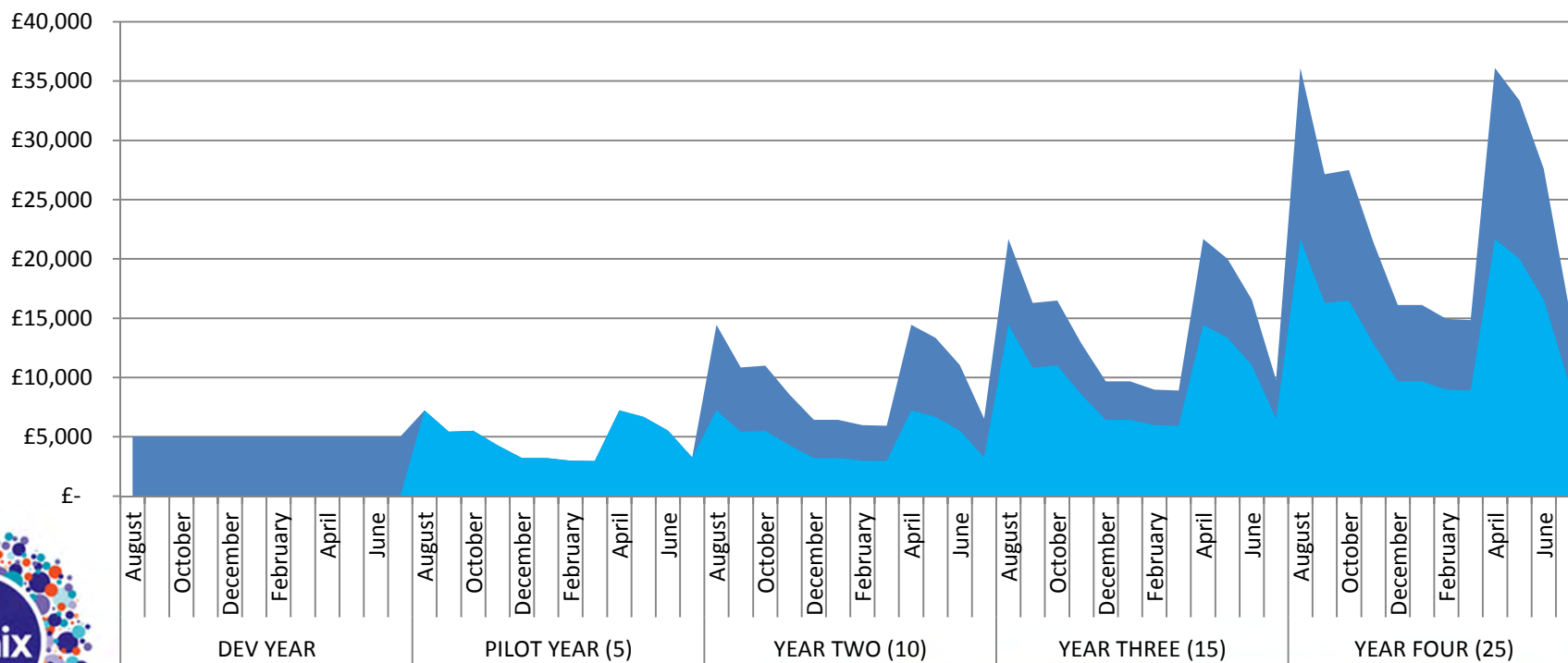
CASH FLOW AND GROWTH

Payment Schedule



CASH FLOW AND GROWTH

‘Lagged’ funding allocations



bemix.org

■ Spending ■ Funding

*You make me feel
I'm going to work
like the rest of my
family*



bemix.org



be seen
be heard
belong

bemix.org